

RESIDENTIAL SALES
LETTINGS & PROPERTY
MANAGEMENT

COWLING & PAYNE



Salesbury Drive, Billericay
Asking Price £315,000

**** GUIDE PRICE £315,000 - £325,000 **** Cowling & Payne are thrilled to offer to the market this rare opportunity to purchase this fully detached two-bedroom chalet bungalow, with the added benefit of being CHAIN FREE.

If you have been looking for a property that is ready for you to make your own, then this could be the one you have been waiting for.

Moving into the property on the ground floor, you will find features such as, a spacious living room with feature fireplace, 3 piece bathroom & a spacious kitchen. Moving upstairs you will then find two spacious double bedrooms.

Externally to the front you will find off street parking for 2 vehicles & a front garden consisting of lawn & pathway. To the rear you will find a good size rear garden with side access so the garden is accessible externally.

Location wise the property is situated in the popular Sunnymede area of Billericay. Nearby you will find various local schools within the catchment area. Within a short walk, there is a social park, local Tesco express & various takeaways/restaurants.

Additional Information

Tenure - Freehold

Council Tax Band - D - Basildon Council



ENTRANCE HALL

BATHROOM

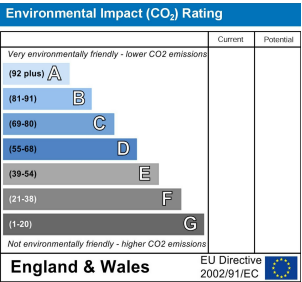
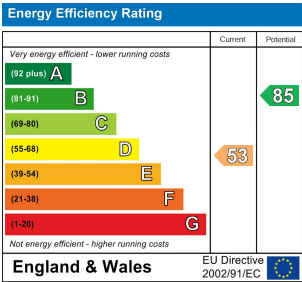
LOUNGE

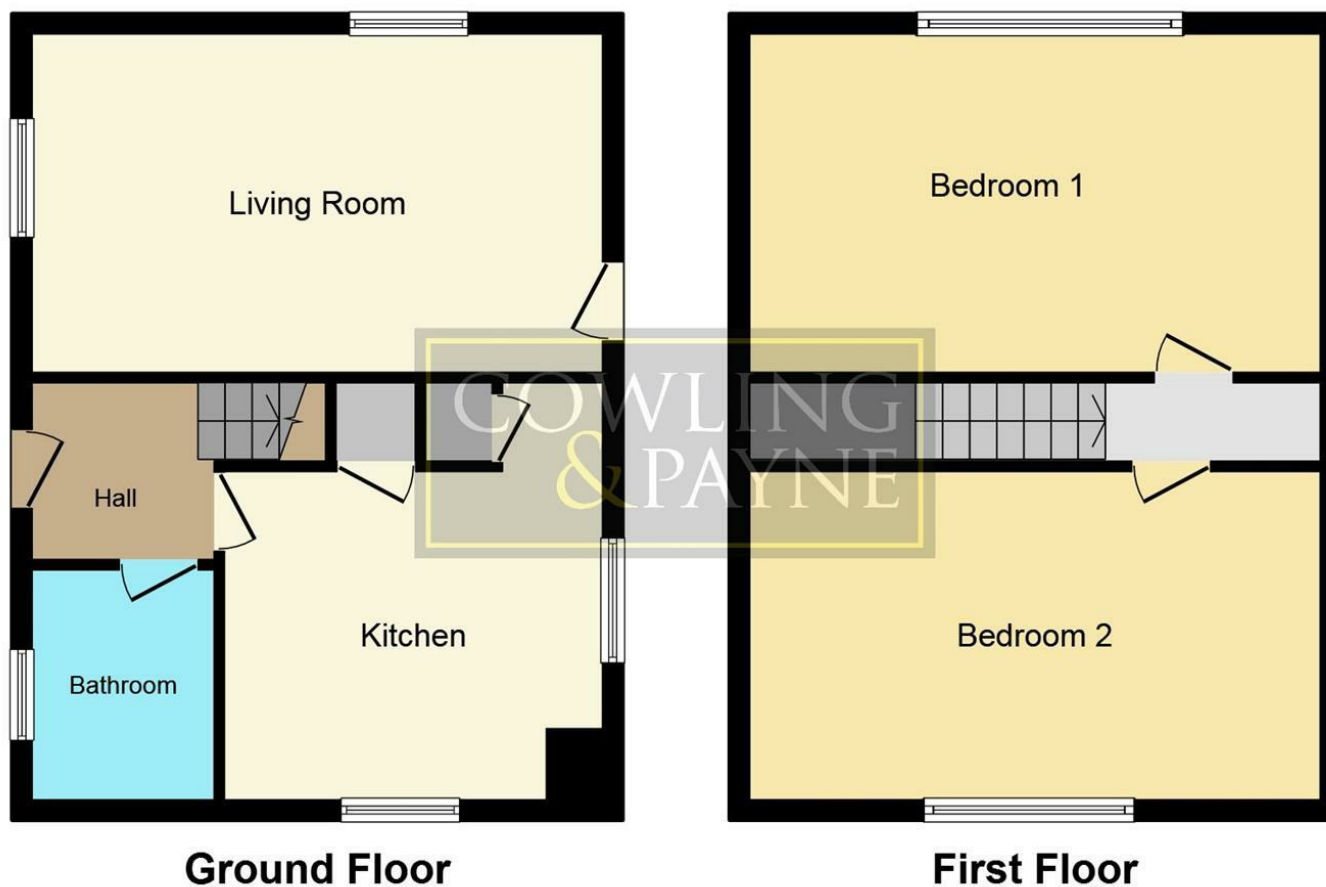
KITCHEN

FIRST FLOOR LANDING

BEDROOM ONE

BEDROOM TWO





This plan is for illustration purposes only and may not be representative of the property. Plan not to scale.

You may download, store and use the material for your own personal use and research. You may not republish, retransmit, redistribute or otherwise make the material available to any party or make the same available on any website, online service or bulletin board of your own or of any other party or make the same available in hard copy or in any other media without the website owner's express prior written consent. The website owner's copyright must remain on all reproductions of material taken from this website.

